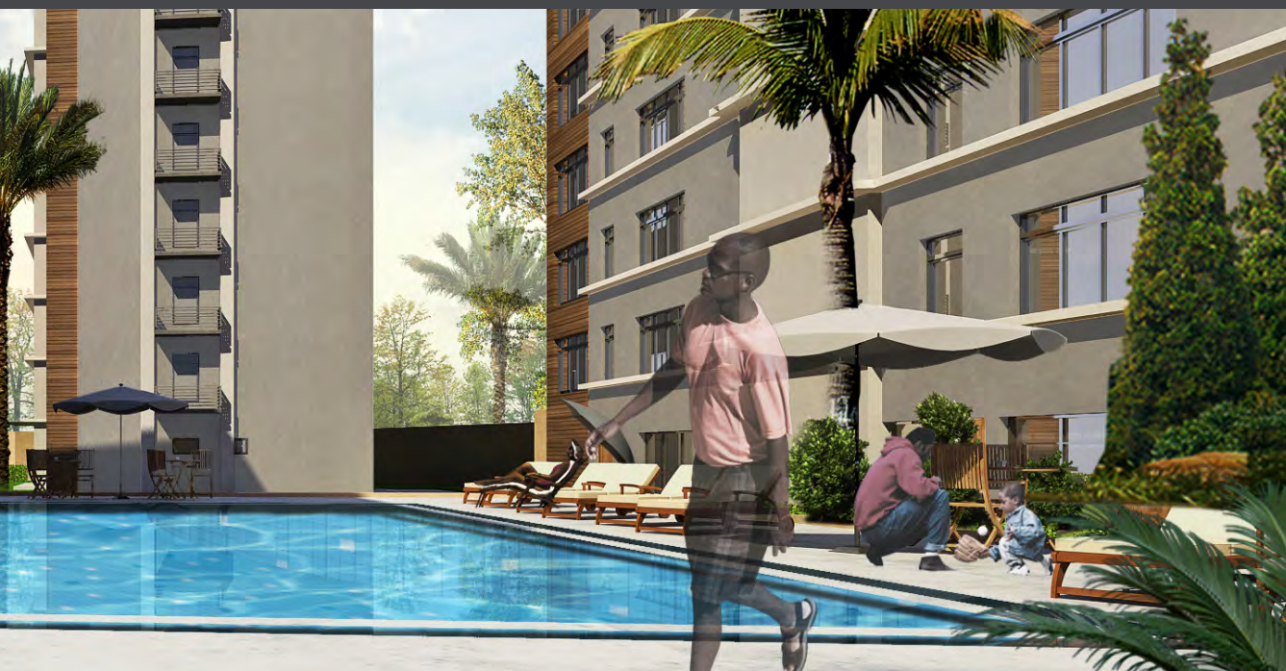


# Visage Apartments

Teslim Elias Close, Victoria Island







PERSPECTIVE VIEW





## == VISAGE APARTMENTS

An innovative and landmark design located in the heart of Victoria Island; this 8 storey building complex follows the idea where form follows function. The concept used in designing **Visage Apartment** is done to optimize space usage while providing style and luxury.

The design combines elegance and sophistication at the heart of bustling Victoria Island.

The 7254 SQ.M prime location has been converted into one of the most fashionable places in Victoria Island, Lagos, depicting an exclusive lifestyle for a select of few.





PERSPECTIVE VIEW





PERSPECTIVE VIEW

## ⚡ FACILITIES AND FUNCTIONS

**Visage Apartments** has been conceived to adapt to the needs of people of high taste.

Incorporating first class amenities and luxurious materials **Visage Apartments** are undoubtedly one of the most stunning residential developments in Lagos.

Here is the perfect match to the elite of Lagos providing beauty, quality and function.

1. Swimming pool
2. Gym
3. Barbecue
4. Gardens
5. Guard House
6. Servants' Quarters
7. Drivers/Cleaner Room





## IDEAS AND IDEALS

This estate comprises four buildings laid out around a communal area where residents share first class serviced facilities with ample parking space and detached service quarters.









**FLOOR MAPS** 

---

**GENERAL LAYOUT**

---

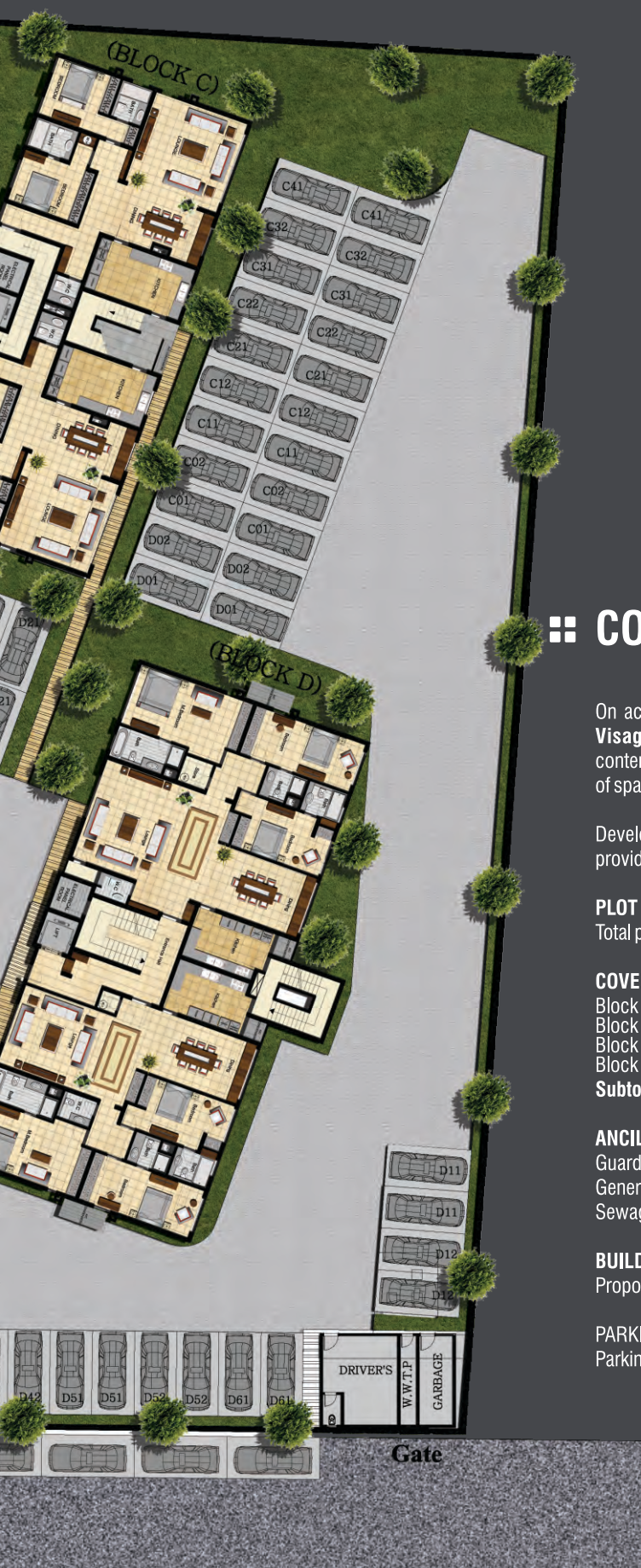
**PLANS**

---



21/22 TESLIM ELIAS CLOSE





## COMTEMPORARY

On account of its design and functionality, The **Visage Apartments** are a true example of contemporary architecture: function, optimal use of space, luxury, uniqueness and elegance.

Developed in the heart of bustling Lagos it provides a haven of peace and tranquility.

**PLOT COVERAGE DATA**  
Total plot area = 7,254 SQ.M

**COVERAGE COMPONENTS**  
Block A = 360 SQ.M  
Block B = 468 SQ.M  
Block C = 360 SQ.M  
Block D = 468 SQ.M  
**Subtotal = 1,656 SQ.M**

**ANCILLARY SITE FACILITIES**  
Guard House + Maintenance  
Generator House  
Sewage treatment plant

**BUILDING HEIGHT REQUIREMENTS**  
Proposed floors = 8

**PARKING**  
Parking spaces = 96 cars



**GROUND FLOOR LEVEL  
Block A & C**

Area  
Apartment 1: 152 SQ.M  
Apartment 2: 152 SQ.M

Entrance hall, 1 Master Bedroom + Closet, 1 Bedroom en-suite, Reception area, Dining Area, Kitchen, Guest Toilet, Service Lobby





# **1ST, 3RD & 5TH FLOOR LEVEL** **Block A & C**

## **Area**

Apartment 1: 152 SQ.M  
 Apartment 2: 152 SQ.M

Entrance hall, Reception area, Dining Area, Kitchen, Guest Toilet, Service Lobby, Staircase



2ND, 4TH & 6TH FLOOR LEVEL  
Block A & C

Area:

Apartment 1: 152 SQ.M

Apartment 2: 152 SQ.M

1 Master bedroom + Closet, 2 Bedrooms en-suite, Family Living, Box Room.





**PENT FLOOR LEVEL**  
**Block A & C**

**Area**  
Apartment 1: 306 SQ.M

Entrance Hall, 1 Master Bedroom + Closet, 2 Bedrooms en-suite, Reception Area, Family living, Dining Area, Kitchen, Guest Toilet, Service Lobby.



GROUND FLOOR LEVEL  
Block B

Area  
Services: 403 SQ.M

Entrance Hall, Club House, Gym, Boy's Quarters, Drivers / Cleaner Room





# **GROUND FLOOR LEVEL Block D**

Area  
Apartment 1: 210 SQ.M  
Apartment 2: 193 SQ.M

Entrance hall, 1 Master Bedroom + Closet, 2 Bedrooms en-suite, Reception area, Dining Area, Kitchen, Guest Toilet, Service Lobby



1ST - 5TH FLOOR LEVEL  
Block B & D

#### Area

Apartment 1: 210 SQ.M

Apartment 2: 193 SQ.M

Entrance hall, 1 Master Bedroom + Closet, 2 Bedrooms en-suite, Reception area, Dining Area, Kitchen, Guest Toilet, Service Lobby



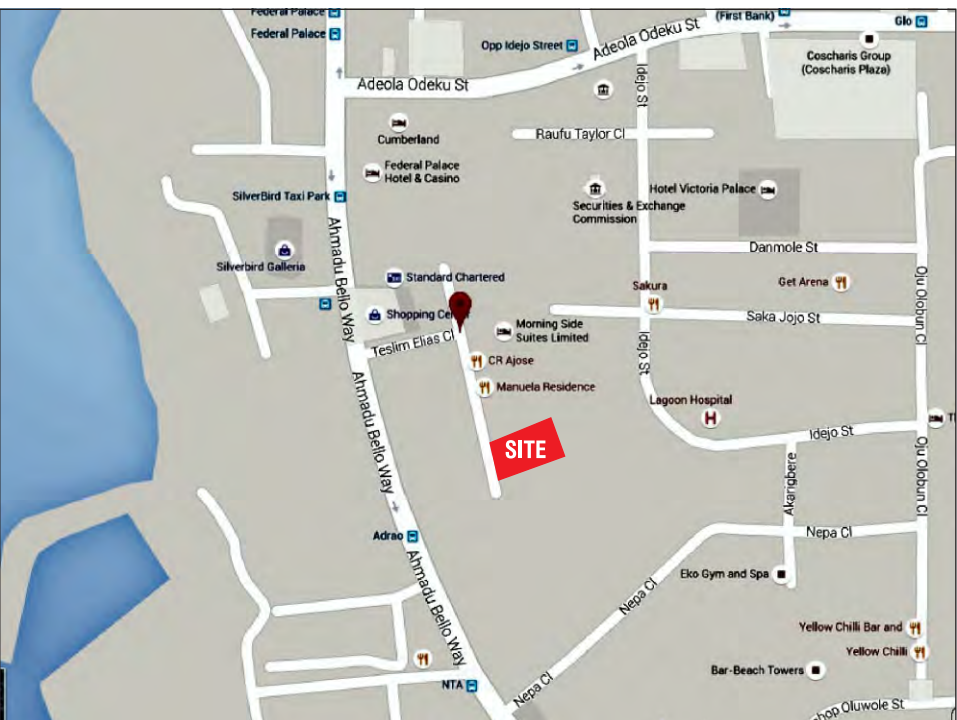


Apartment 1

**PENT FLOOR LEVEL**  
**Block B & D**

**Area**  
Apartment 1: 406 SQ.M

Entrance hall, 1 Master Bedroom + Closet, 3 Bedrooms en-suite, Reception Area, Dining Area, Kitchen, Bar Area, Guest Toilet, Service Lobby.









## **VISAGE APARTMENTS**

---

### **Client**

LENOX & BLAIR (NIGERIA) LTD

### **Main Contractor**



EL-ALAN CONSTRUCTION COMPANY (NIGERIA) LTD.  
9, MacGregor Road, Ikoyi, Lagos, Nigeria. tel: 01-4615461 email: [info@elalan.com](mailto:info@elalan.com)